



Wi-Fi 7

BE9300 Tri-Band Wi-Fi 7 Router

Redefining Wi-Fi Routers



Archer BE550

Blazing-Fast Speeds

3.9× Faster with 9328 Mbps Tri-Band Wi-Fi^{††}

Ultra Smooth Wi-Fi

Lower Latency with Minimal Buffering[^]

Far-Reaching Coverage

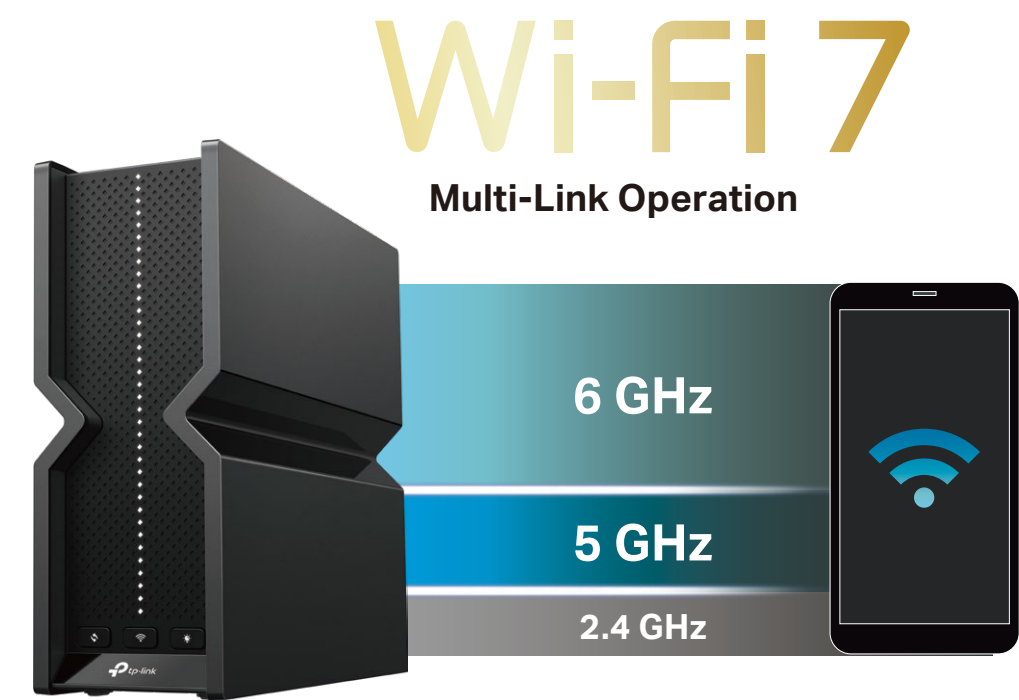
Broader 360-Degree Wi-Fi[†]

Full Multi-Gig Connectivity

5× 2.5 Gbps Ports Boost Wired Connections

Highlights

Wi-Fi 7 — Wi-Fi Like Never Before



Blazing-Fast 9328 Mbps Tri-Band Wi-Fi†

Wi-Fi 7 unleashes the full potential of the 6 GHz band with up to 320 MHz channels and 5.8 Gbps Wi-Fi speeds. Enjoy full access to 8K streaming and high-speed downloading.^{†*}



3.9× Faster Speeds to Power Your Devices

Multi-Link Operation (MLO) enables Archer BE550 to transmit data with Wi-Fi 7 clients across the 6 GHz and 5 GHz bands simultaneously, delivering 3.9× faster Wi-Fi speeds than Wi-Fi 6/6E routers.[‡]



Ultra Smooth Wi-Fi with Lower Latency

Significantly lower latency than Wi-Fi 6/6E routers enables emerging applications like VR/AR, video conferencing, and online gaming to always run at top performance.[^]

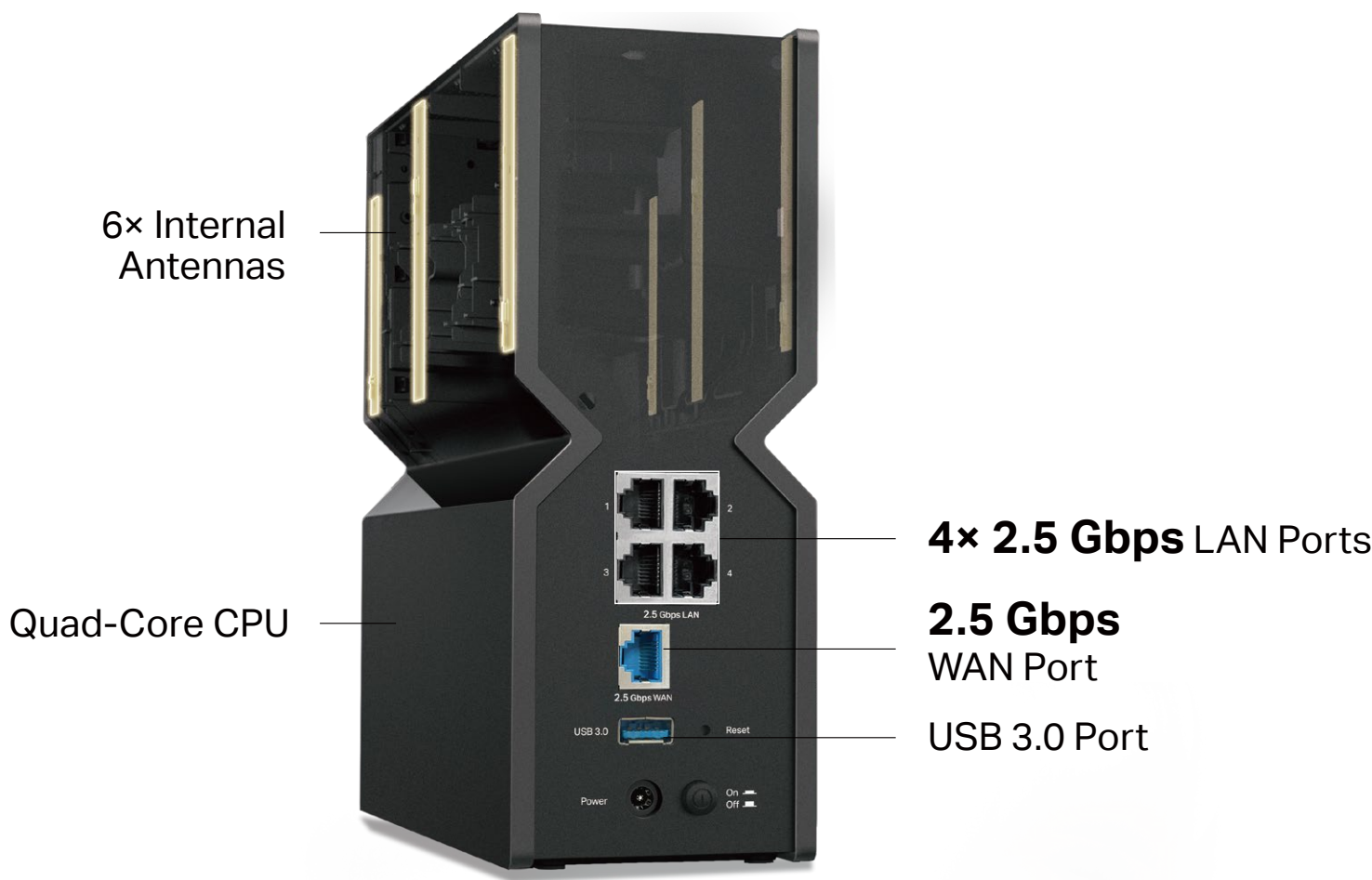


Higher Capacity for More Devices†

Communicates with multiple devices via 6 streams and tri-band simultaneously. Combined with the powerful CPU, Wi-Fi 7 provides congestion-free signals to your laptop, TV, thermostat, and baby monitor.

Highlights

Archer BE550 — Redefining Wi-Fi Routers



5× 2.5 Gbps Ports for Full Multi-Gigabit Connectivity

One 2.5 Gbps WAN port maximizes home internet speeds with up to 2.5× the wired speed of a typical Gigabit Ethernet port. The additional four 2.5 Gbps LAN ports and one USB 3.0 port make Archer BE550 an ideal solution for future-proofing your home network.[§]

Far-Reaching Wi-Fi Coverage

6× optimally positioned antennas, proprietary Wi-Fi optimization, and Beamforming technology deliver broader coverage, more capacity, stronger and more reliable connections, and less interference.

Highlights

Enhanced Security

Manage online time and block inappropriate content to keep your family safe online with Parental Controls. Network Protection further keeps your home network safe by preventing potential threats and security issues.**



Great Compatibility

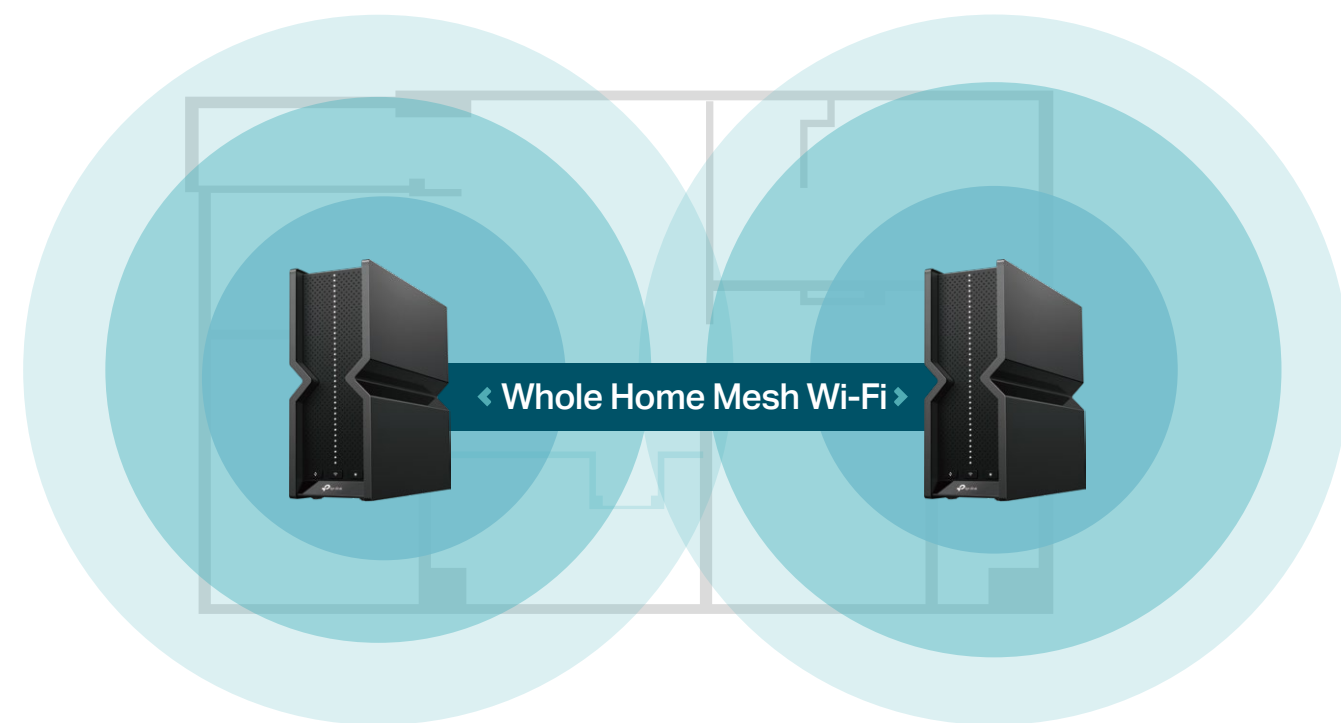
Take your Wi-Fi to the next level without worry. Archer BE550 offers great compatibility by working with all Wi-Fi generations and devices and all internet providers.* It also works with Alexa and Google Assistant.



Highlights

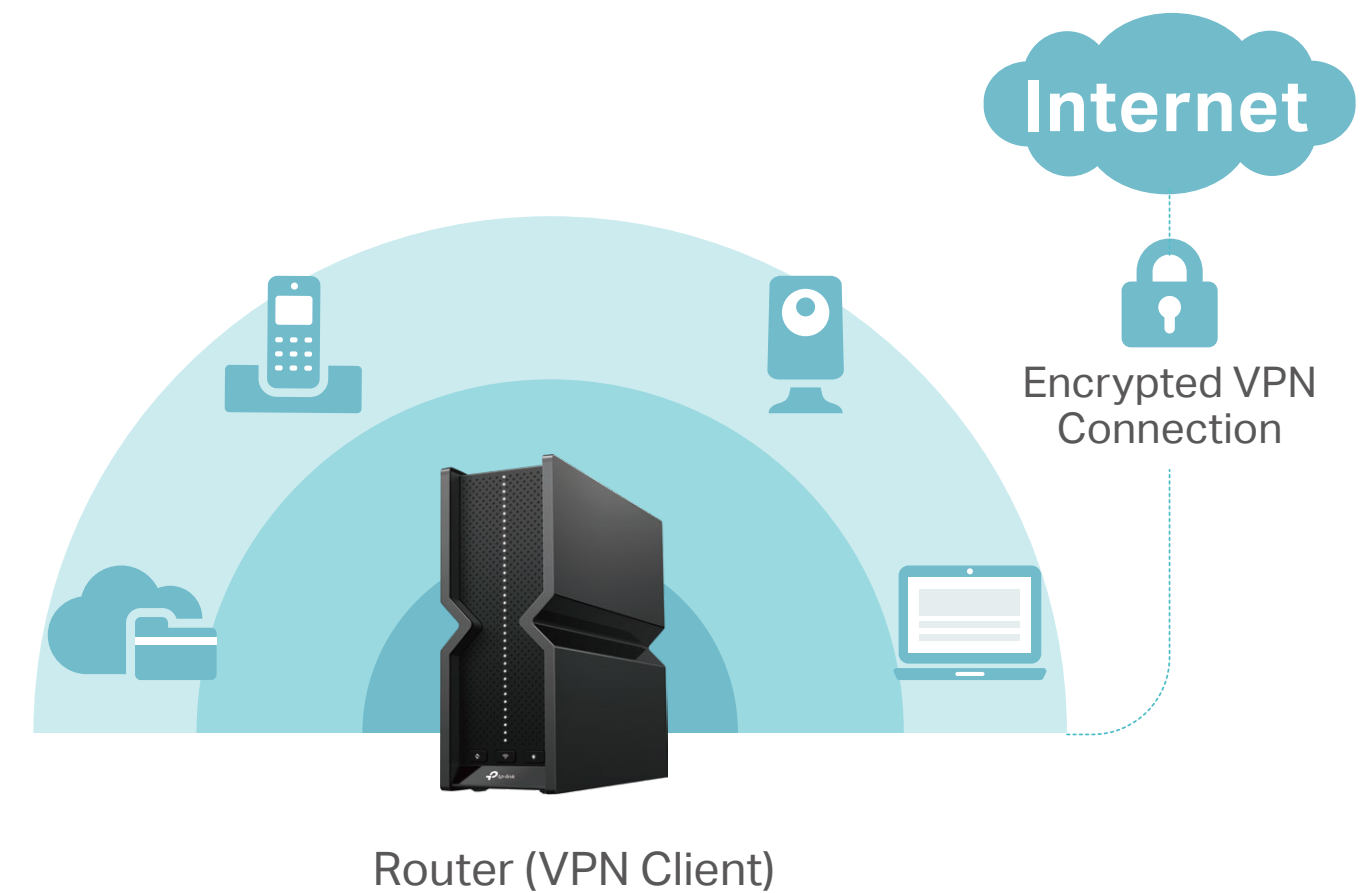
EasyMesh Compatible

Archer BE550 is compatible with EasyMesh to form seamless whole home mesh Wi-Fi, preventing drops and lag when moving between signals. Enjoy uninterrupted streaming when moving around your home.***



VPN Client Support

Archer BE550 allows specified devices in your home network to access remote VPN servers without needing to install VPN software on every device. Archer BE550 can also run a VPN and ordinary internet connections at the same time for added security and flexibility.



Features



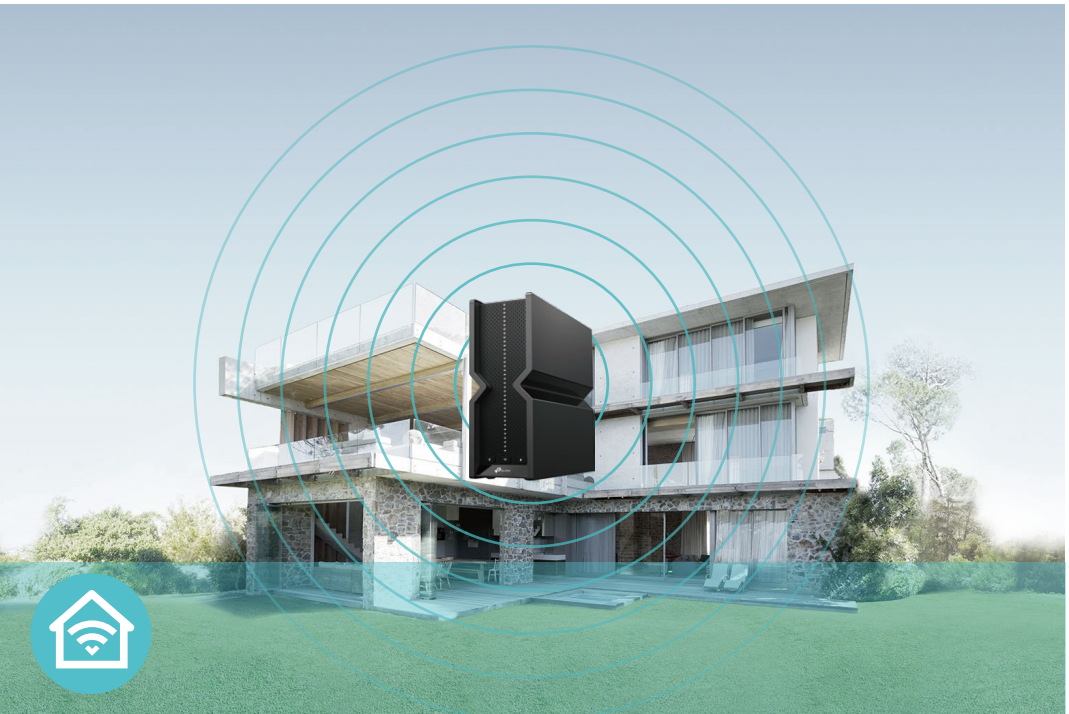
Ultra-Fast Speed

- **Blazing-Fast BE9300 Wi-Fi** – Up to 9328 Mbps tri-band Wi-Fi 7 enables gaming, streaming and high-speed downloading on multiple devices—all at the same time[†]
- **Full 2.5G Ports** – One 2.5 Gbps WAN port and four 2.5 Gbps LAN ports break through the 1G bottleneck, driving your devices to peak performance.
- **Greenfield 6 GHz Band** – Provides robust high-speed connections with a brand-new expansive and congestion-free band.
- **Wi-Fi 7** – Wi-Fi 7 (802.11be) features advanced technologies, including 320MHz channels and 4K QAM, drastically increasing the speed and efficiency of your entire network.[‡]
- **Smart Connect** – Intelligently assigns each device to the best Wi-Fi band for optimal performance.



Reliable Connections

- **9328 Mbps Tri-Band WiFi 7** – Enables your devices to run at full speed. Enjoy fluent 4K/8K streaming, immersive AR/VR gaming, and blazing-fast downloads.^{†‡}
- **Airtime Fairness** – Balances bandwidth of connected devices to improve overall throughput and efficiency.



Broad Wi-Fi Range

- **Ultimate Range Wi-Fi** – Proprietary WiFi optimization and 6x optimally positioned antennas boost WiFi signals throughout your home.
- **Beamforming Technology** – Concentrates Wi-Fi signals towards individual devices to ensure stronger connections.
- **Seamless EasyMesh network** – Transfer between seamless whole-home Wi-Fi without any drops or lag and manage your whole network using a centralized panel.

Features



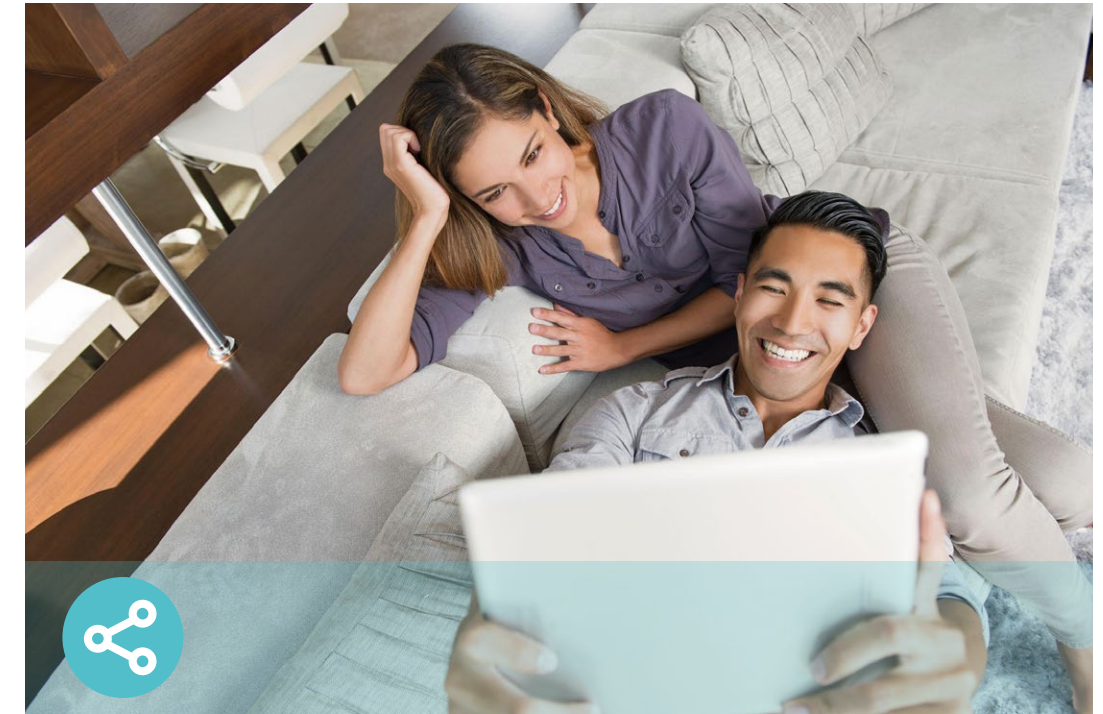
Ease of Use

- Hassle-free Management with Tether App – Network management is made easy with the TP-Link Tether app, available on any Android and iOS device.
- Intuitive Web UI – Ensures quick and simple installation without hassle.
- WPS (Wi-Fi Protected Setup) – Help you to quickly and securely connect your devices to the router's network with a tap.
- Backwards Compatible – Take your Wi-Fi to the next level while being backwards compatible with existing 802.11a/b/g/n/ac/ax Wi-Fi standards.
- Works with Amazon Alexa and Google Assistant – Utilize Amazon Alexa and Google Assistant to control everything via voice commands to enjoy truly intelligent life.



Robust Security

- HomeShield – TP-Link's premium security services keep your home network safe with cutting-edge features for network and IoT protection.**
- Parental Controls – Manage online time and block inappropriate content to control your family's digital habits.
- Guest Network – Provides separate access for guests to secure the home network.
- Advanced WPA3 Encryptions – The latest WiFi security protocol, WPA3, brings new capabilities to improve cybersecurity in personal networks.*
- Access Control – Establishes a whitelist or blacklist to allow or restrict certain devices to access the internet.



Value-Added Features

- VPN Clients and Server Supported – With VPN client support, BE550 allows specified devices in your home network to access remote VPN servers without needing to install VPN software on every device.
- USB Port – Connects external storage devices to rapidly share files, photos, and videos.
- Built-in Media Server – Allows you to play music, watch videos and view photos from any device on your network.
- More Values – Advanced functions like IPTV, IPv6 compatibility, and Access Point mode bring more values.

Specifications

Wireless

- Standards: IEEE 802.11be/ax 6 GHz, IEEE 802.11be/ax/ac/n/a 5 GHz, IEEE 802.11be/ax/n/g/b 2.4 GHz
- WiFi Speeds: 5760 Mbps (6 GHz) + 2880 Mbps (5 GHz) + 688 Mbps (2.4 GHz)[†]
- WiFi Range: 6× High-Performance Antennas with Optimized Layout
- WiFi 7 Features: Multi-Link Operation (MLO), 320 MHz Bandwidth, 4K-QAM, and Multi-RUs
- Working Modes: Router Mode, Access Point Mode

Hardware

- Ethernet Ports: 1× 2.5 Gbps WAN Port + 4× 2.5 Gbps LAN Ports
- USB Support: 1× USB 3.0 Port
- Buttons: Power On/Off Button, Reset Button, WPS Button, Wi-Fi Button, LED Button

Security

- WiFi Encryption: WPA, WPA2, WPA3, WPA/WPA2-Enterprise (802.1x)
- Network Security: SPI Firewall, Access Control, IP & MAC Binding, Application Layer Gateway, HomeShield Security
- Guest Network:
6 GHz Guest Network, 5GHz Guest Network, 2.4 GHz Guest Network
- VPN Server: OpenVPN, PPTP, L2TP VPN Server, Wireguard VPN
- VPN Client: OpenVPN, PPTP, L2TP VPN Client, Wireguard VPN

Software

- Protocols: IPv4, IPv6
- Service Kits: HomeShield
- EasyMesh: Supported
- Parental Controls: HomeShield Parental Controls
- WAN Types: Dynamic IP, Static IP, PPPoE, PPTP, L2TP
- Quality of Service: QoS by Device
- Cloud Service: Auto Firmware Upgrade, TP-Link ID, DDNS
- NAT Forwarding: Port Forwarding, Port Triggering, DMZ, UPnP
- DDNS: TP-Link, NO-IP, DynDNS

Specifications

Physical

- Dimensions: 3.0 × 9.1 × 8.0 in (76 × 231.7 × 203 mm)
- Package Contents:
Wi-Fi Router Archer BE550
Power Adapter
RJ45 Ethernet Cable
Quick Installation Guide

Other

- System Requirements:
Internet Explorer 11+, Firefox 12.0+, Chrome 20.0+, Safari 4.0+, or other JavaScript-enabled browser
Cable or DSL Modem (if needed)
Subscription with an internet service provider (for internet access)
- Certifications: FCC, CE, RoHS
- Environment:
Operating Temperature: 0℃~40℃ (32℉ ~104℉)
Operating Humidity: 10%~90% non-condensing



For more information, please visit
https://www.tp-link.com/products/details/?model=Archer+BE550_V2
or scan the QR code left

Test Data

- WiFi Transmission Power:

FCC: ≤ 30 dBm (2.4 GHz), ≤ 30 dBm (5 GHz), ≤ 25 dBm (6 GHz)

CE: ≤ 23 dBm EIRP (5.17 GHz-5.35 GHz), ≤ 30 dBm EIRP (5.47 GHz-5.725 GHz); ≤ 20 dBm EIRP (2.4 GHz); ≤ 23 dBm EIRP (6 GHz)
- WiFi Reception Sensitivity:

2.4 GHz:
11ax HE20 MCS0: -96dBm, 11ax HE20 MCS11: -67dBm
11ax HE40 MCS0: -93dBm, 11ax HE40 MCS11: -62dBm
11ax HE80 MCS0: -89dBm, 11ax HE80 MCS11: -60dBm
11ax HE160 MCS0: -87dBm, 11ax HE160 MCS11: -61dBm
11be EHT20 MCS13: -58dBm, 11be EHT40 MCS13: -56dBm
11be EHT80 MCS13: -53dBm, 11be EHT160 MCS13: -51dBm
6 GHz:
11ax HE20 MCS0: -95dBm, 11ax HE20 MCS11: -65dBm
11ax HE40 MCS0: -93dBm, 11ax HE40 MCS11: -63dBm
11ax HE80 MCS0: -90dBm, 11ax HE80 MCS11: -60dBm
11ax HE160 MCS0: -87dBm, 11ax HE160 MCS11: -58dBm
11be EHT20 MCS13: -60dBm, 11be EHT40 MCS13: -58dBm
11be EHT80 MCS13: -54dBm, 11be EHT160 MCS13: -52dBm
11be EHT320 MCS0: -84dBm, 11be EHT320 MCS13: -48dBm

†Maximum wireless signal rates are the physical rates derived from IEEE Standard 802.11 specifications. Higher capacity is based on laboratory test data, which analyzed the connections of different devices on the 6 GHz, 5 GHz, and 2.4 GHz bands simultaneously. These devices simulated a typical home scenario by running simultaneous applications in the same room that included 4K video, 1080p video, 720p video, file downloading, web browsing, IP cameras, and other IoT devices. Actual wireless data throughput, wireless coverage, and connected devices are not guaranteed and will vary as a result of internet service provider factors, network conditions, client limitations, and environmental factors, including building materials, obstacles, volume and density of traffic, and client location. Actual network speed may be limited by the rate of the product's Ethernet WAN or LAN port, the rate supported by the network cable, internet service provider factors, and other environmental conditions.

‡3.9× faster Wi-Fi speed refers to the theoretical speeds of Wi-Fi 7 clients when connected to Archer BE550 compared with a Wi-Fi 6 or Wi-Fi 6E router. Wi-Fi 7 clients need to support Multi-Link Operation (MLO) and the 6 GHz band to reach up to 9.3 Gbps when connected to the 2.4 GHz, 5 GHz, and 6 GHz bands of Archer BE550 simultaneously. Wi-Fi 6 and Wi-Fi 6E routers may only provide 2402 Mbps on the 5 GHz or 6 GHz bands separately.

ΔSignificantly Lower Latency refers to the latency improvement of Wi-Fi 7 routers compared to Wi-Fi 6/6E routers, based on laboratory test data. The test conditions had the same 5 GHz or 6 GHz single-frequency wireless interference and tested the maximum latencies of Wi-Fi 7 clients (with MLO turned on) connecting to the 5 GHz and 6 GHz bands of Archer BE550 (with MLO turned on) simultaneously and to the 5 GHz or 6 GHz bands of a Wi-Fi 6/6E router (without the MLO function).

§2.5 Gbps internet speeds require compatible service plans and equipment. Actual network speed may be limited by the rate of the product's Ethernet WAN or LAN port, the rate supported by the network cable, internet service provider factors, and other environmental conditions.

☆Use of WPA3 requires clients to also support the corresponding feature.

◇Use of Wi-Fi 7 (802.11be), Wi-Fi 6 (802.11ax), and features including Multi-Link Operation (MLO), 320 MHz Bandwidth, 4K-QAM, Multi-RUs, OFDMA, and MU-MIMO requires clients to also support the corresponding features.

※The 320 MHz bandwidth is only available on the 6 GHz band. Simultaneously, the 320 MHz bandwidth on the 6 GHz band and 160 MHz bandwidth on the 5 GHz band may be unavailable in some regions/countries due to regulatory restrictions. Double channel width and speed refer to 320 MHz compared to 160 MHz for Wi-Fi 6 routers.

*Wi-Fi generations represent the wireless standard IEEE 802.11 a/b/g/n/ac/ax/be. All devices need to support 802.11 Wi-Fi protocols. Users may require an extra modem device that is compatible with their internet service provider to gain internet access.

**HomeShield includes the Free Basic Plan. Fees apply for the Pro Plan. Visit [tp-link.com/homeshield](https://www.tp-link.com/homeshield) for more information.

***TP-Link EasyMesh-compatible products can network with other devices that use EasyMesh. Failed connections may be due to firmware conflicts of different vendors. The EasyMesh-compatible function is still being developed on some models and will be supported in subsequent software updates.

This router may not support all the mandatory features as ratified in the IEEE 802.11be specification. Further software upgrades for feature availability may be required.

Pictures are for reference only. If there are any inconsistencies between the product image and the actual product, the actual product shall prevail.

©2024 TP-Link